

See discussions, stats, and author profiles for this publication at: <https://www.researchgate.net/publication/342260120>

# A Water-Based Sequential Preparatory Approach vs. Conventional Aquatic Training in Stroke Patients: A Randomized Controlled Trial With a 1-Month Follow-Up

Article in *Frontiers in Neurology* · June 2020

DOI: 10.3389/fneur.2020.00466

CITATIONS

3

READS

76

8 authors, including:



**Giulia Temperoni**

Foundation Santa Lucia

5 PUBLICATIONS 23 CITATIONS

[SEE PROFILE](#)



**Andrea Curcio**

Foundation Santa Lucia

5 PUBLICATIONS 23 CITATIONS

[SEE PROFILE](#)



**Marco Iosa**

Foundation Santa Lucia

201 PUBLICATIONS 3,796 CITATIONS

[SEE PROFILE](#)



**Mangiarotti Marco Antonio**

4 PUBLICATIONS 5 CITATIONS

[SEE PROFILE](#)

Some of the authors of this publication are also working on these related projects:



Rhythmic Patterns in Neuroscience and Human Physiology [View project](#)



Vestibular Rehabilitation in Patients With Neurologic Diseases [View project](#)



# A Water-Based Sequential Preparatory Approach vs. Conventional Aquatic Training in Stroke Patients: A Randomized Controlled Trial With a 1-Month Follow-Up

Giulia Temperoni<sup>††</sup>, Andrea Curcio<sup>††</sup>, Marco Iosa<sup>1</sup>, Marco Antonio Mangiarotti<sup>2</sup>, Daniela Morelli<sup>1</sup>, Sara De Angelis<sup>1</sup>, Serena Vergano<sup>1</sup> and Marco Tramontano<sup>1\*</sup>

<sup>1</sup> Fondazione Santa Lucia IRCCS, Rome, Italy, <sup>2</sup> ANIK, Associazione Nazionale Idrokinesiterapisti, Rome, Italy

## OPEN ACCESS

### Edited by:

Marialuisa Gandolfi,  
University of Verona, Italy

### Reviewed by:

Alessio Baricich,  
Università degli Studi del Piemonte  
Orientale, Italy  
Ota Gál,  
Charles University, Czechia

### \*Correspondence:

Marco Tramontano  
m.tramontano@hsantalucia.it

<sup>††</sup>These authors have contributed  
equally to this work

### Specialty section:

This article was submitted to  
Neurorehabilitation,  
a section of the journal  
Frontiers in Neurology

**Received:** 23 December 2019

**Accepted:** 29 April 2020

**Published:** 18 June 2020

### Citation:

Temperoni G, Curcio A, Iosa M,  
Mangiarotti MA, Morelli D,  
De Angelis S, Vergano S and  
Tramontano M (2020) A Water-Based  
Sequential Preparatory Approach vs.  
Conventional Aquatic Training in  
Stroke Patients: A Randomized  
Controlled Trial With a 1-Month  
Follow-Up. *Front. Neurol.* 11:466.  
doi: 10.3389/fneur.2020.00466

**Background:** Many studies hypothesize that people who have suffered stroke could benefit from water-based exercises to improve their strength and ability to perform the activities of daily living.

**Objective:** The study aim was to compare the effects of a water-based sequential preparatory approach (SPA) and conventional aquatic therapy in improving motor functions and quality of life in patients with chronic stroke.

**Methods:** Thirty-three chronic stroke outpatients diagnosed with hemiplegia were recruited and randomly assigned to the experimental or control group. Subjects in the experimental group underwent a trial water-based SPA balance training, and patients in the control group were given traditional water balance training. Both groups of participants underwent 45 min of therapy twice a week for 4 weeks. All patients were evaluated before treatment (T0), after 4 weeks of training (T1), and 4 weeks after the end of training (T2) using the Berg balance scale (BBS), the modified Barthel index (MBI), the Tinetti balance and gait scale (TBG), the Stroke Specific Quality Of Life Scale (SS-QOL), and the modified Ashworth scale (MAS).

**Results:** After the training, statistically significant differences ( $p < 0.05$ ) were found between the groups in their score averages on the BBS ( $p = 0.01$ ) and the SS-QOL scale ( $p = 0.03$ ). Furthermore, the SPAG showed a significantly greater percentage of improvement on the BBS ( $p = 0.02$ ) and the SS-QOL ( $p = 0.03$ ). Both groups obtained a significantly improved MAS score ( $p < 0.01$ ).

**Conclusion:** Results indicate that water training based on an SPA is more effective than traditional aquatic training for balance rehabilitation of chronic poststroke patients.

**Keywords:** aquatic therapy, water-based therapy, stroke, balance, gait, spasticity

## INTRODUCTION

Many stroke patients have sensorimotor impairments that disrupt their motor performance (1). Furthermore, stroke-induced brain damage often results in balance and gait disorders that can significantly affect quality of life (QoL) (2). The 2016 SPREAD guidelines (3) documented severe disability in 40% of stroke patients that persisted even if they had received a specific rehabilitation training within the first 6 months following the event. Although many studies have documented gait recovery in hemiparetic patients within 6 months after a brain stroke (4, 5), residual balance and gait disorders are common in the poststroke chronic phase (6). Balance and gait are complex multifactorial systems in which motor, sensory, and cognitive components interact. This information is integrated by the central nervous system into a continuous sensorial re-weighting that ensures postural control in both static and dynamic conditions (7, 8). The weighting of the sensory inputs likely depends on environmental conditions, and it changes according to the motor task being performed by the subject (9–11). The integration of multisensory information (i.e., visual, vestibular, and somatosensory) is impaired following a stroke (12).

A Cochrane Review (13) systematically synthesized and compared the effects of aquatic and land-based therapies on the activities of daily living (ADLs) of patients following stroke and found that water-based exercises improved strength and ADLs (13). A recent review (14) indicates that randomized controlled trials (RCTs) comparing aquatic methods in both environments are lacking. The same movements in water and on dry land that target postural stability and gait require different competences. For example, the postural instability that occurs while squatting in water was enacted on land by sitting on a therapy ball (15). Furthermore, land-based conventional rehabilitation is generally task oriented, customized, and challenging and follows a specific preparatory sequence of exercises according to patients' disabilities (16). The water-based exercise protocol reported in previous reviews consisted of walking, stretching, balance, and aerobic exercises that were not systematically organized (17–24). Overall, the research methodology was lacking in the follow-up, and the long-term effects are still not clear (14). Therefore, we believe that a sequential preparatory approach (SPA), based on increasing difficulty and following a specific sequence of preparatory exercises (from the simplest to the most complex), should also be used in an aquatic environment.

Based on the above line of reasoning, our hypothesis is that a water-based SPA might be more effective than conventional aquatic therapy. For these reasons, the aim of this study is to investigate the effects of a water-based SPA compared with a conventional water-based therapy on motor functions and QoL in stroke survivors.

## METHODS

### Trial Design

This was a two-arm, single-blind randomized controlled trial with a 1-month follow-up (Figure 1). The aim was to investigate the effects of a water-based, sequential, preparatory approach

compared with a conventional, water-based therapy in stroke survivors. The guidelines for Good Clinical Practice, and the Consolidated Standards of Reporting Trials (CONSORT), were followed. This trial was approved by the Local Ethics Committee of Fondazione Santa Lucia (Protocol CE/PROG.728); all participants gave their written informed consent for participation in the study.

A researcher who was not involved in the intervention sessions assessed the patients' eligibility to participate on the basis of the inclusion and exclusion criteria. Participants were randomly assigned to one of two groups: experimental (SPAg) or control (CTRLg) group.

### Participants

Thirty-three outpatients (21 males, mean age 51 years) with a diagnosis of stroke (>6 months after stroke) were recruited and enrolled on the basis of consecutive sampling through the Aquatic Rehabilitation Services of Fondazione Santa Lucia (FSL), Institute for Research and Health Care, from February 2019 to September 2019. Inclusion criteria were stroke with unilateral hemiplegia within the previous 6 months and ability to walk without any device or need of continuous physical assistance to support body weight or maintain balance (Functional Ambulation Classification  $\geq 3$ ) and acclimatization to water. Subjects were aged between 25 and 80 years. Exclusion criteria were cognitive deficits affecting the ability to understand task instructions (Mini-Mental State Examination  $> 24$ ), severe unilateral spatial neglect (diagnosed with a test battery that included the Letter Cancellation test, Barrage test, Sentence Reading test, and the Wundt-Jastrow Area Illusion Test), severe aphasia (diagnosed by means of neuropsychological assessment), presence of other neurological diseases, presence of cutaneous and mycosis infections, presence of open wounds, eczema, skin ulcers, and decubitus lesions, presence of severe burns, presence of percutaneous endoscopic gastrostomy (PEG) or tracheostomy, urinary incontinence, and presence of otitis and orthopedic or cardiac comorbidities that would limit participation in the experimental and conventional training (all of which were clinically evaluated).

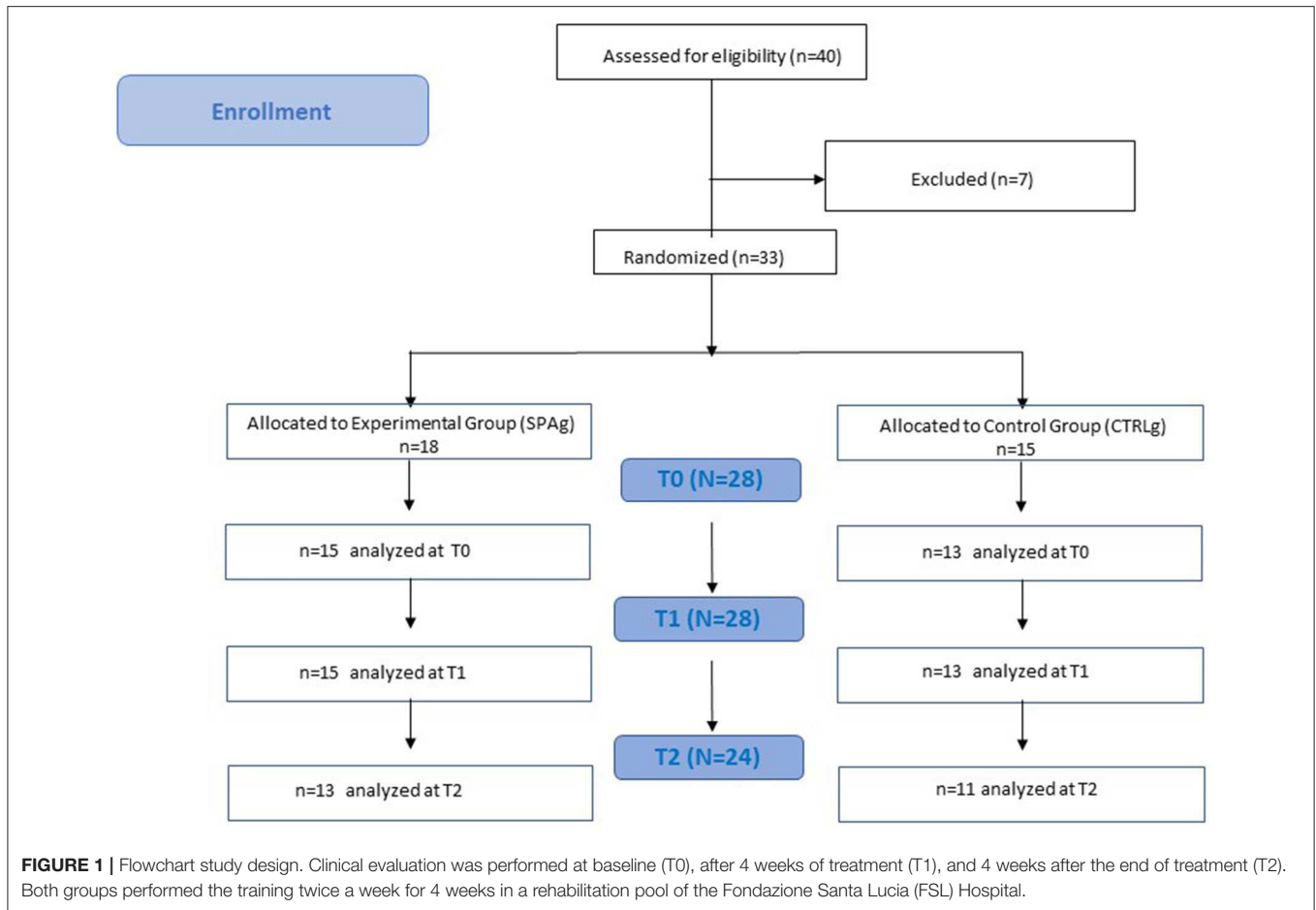
Demographic characteristics of the sample are reported in Table 1.

### Interventions

Patients underwent eight individual rehabilitation sessions as outpatients (2 days/week, 4 weeks), in a rehabilitation pool at Fondazione Santa Lucia Neurorehabilitation hospital. Each session lasted 45 min. The water temperature was between 30 and 32°C.

### Sequential Preparatory Approach

The experimental training consisted of a sequential, preparatory approach aimed at enhancing dynamic postural stability. The exercises followed a specific sequence starting from a kneeling position, proceeding to a sitting position, and ending with a supine position. Step exercises preparatory for gait were performed using a step and two floating aids. Gait exercises were performed first with the upper limbs placed on two floating



**TABLE 1 |** Demographic characteristics.

	SPAg	CTRLg
Age (years)	52.44 ± 10.51	52.01 ± 17.10
Gender	14M	7M
Time since stroke (months)	13.33 ± 7.10	16.87 ± 13.79
Stroke location (emisphere)	8R	8R
Stroke type, ischemic	7I	8I

Mean ± standard deviation.  
M, male; F, female; R, right; I, ischemic.

aids and then during a dual motor task (i.e., catching a ball thrown by the therapist). The training was carried out by two physiotherapists who had at least 5 years of experience in aquatic neurorehabilitation.

### Standard Aquatic Therapy

The control group performed water-based exercises, in line with suggestions of the Hydrotherapy Association of Chartered Physiotherapists Guidance on Good Practice in Hydrotherapy (25). These consisted of warm-up exercises, stretching exercises for the lower limbs, recruitment exercises, and walking exercises during each phase of gait (single stance, swing, and

double stance). The training was carried out by the same physiotherapists who implemented the SPA.

### Outcomes

At enrollment, clinical and demographic data were collected. A blinded examiner assessed primary and secondary outcomes before treatment (T0), after 4 weeks of training (T1), and 4 weeks after the end of training (T2). The primary outcome measure was the Berg balance scale (BBS) (26).

Secondary outcome measures were the modified Barthel index (BIM) (27), the Tinetti balance and gait scale (TBG) (28), and the Stroke Specific Quality Of Life Scale (SS-QOL) (29). To assess potential side effects on spasticity, the modified Ashworth scale (MAS) (30) score was used to evaluate spasticity of elbow flexors, wrist flexors, and finger flexors of the affected upper limb and of hip adductors, knee extensors, and ankle plantar flexors of the affected lower limb. To facilitate data analysis, MAS scores (0, 1, 1+, 2, and 3) were assigned numerical values (0, 1, 2, 3, and 4, respectively). All clinical scale scores were collected by a physiotherapist who was blind to group allocation.

### Sample Size

The sample size complied with the minimum number of participants recommended by a power analysis performed on preliminary data ( $\alpha = 0.05$ ;  $\beta = 0.8$ ; Effect size = 0.5) for

**TABLE 2** | Clinical scales scores.

	SPAg			CTRLg		
	T0 Mean ± SD	T1 Mean ± SD	T2 Mean ± SD	T0 Mean ± SD	T1 Mean ± SD	T2 Mean ± SD
MBI	83.9 ± 7.9	93.4 ± 10.3	98.2 ± 7.6	86 ± 13.4	90.9 ± 10.6	94.7 ± 12.4
SS-QOL	166.3 ± 21.8	188.2 ± 21.0	190.6 ± 21.0*	153.4 ± 31.6	161.8 ± 31.1	163.2 ± 29.8
BBS	40.8 ± 6.8	48.8 ± 6.4*	51.4 ± 3.3	36.7 ± 11.1	40.7 ± 10.8	43.1 ± 13.0
TBG	18.2 ± 4.1	23.1 ± 4.2	23.8 ± 3.8	18.0 ± 5.1	20.3 ± 5.0	21.7 ± 5.6
MAS UL	1.1 ± 0.7	0.8 ± 0.8	0.5 ± 0.7	0.8 ± 0.7	0.5 ± 0.7	0.4 ± 0.6
MAS LL	0.6 ± 0.7	0.2 ± 0.3	0.1 ± 0.3	0.4 ± 0.4	0.2 ± 0.4	0.2 ± 0.4

SPAg, experimental group; CTRLg, control group; MBI, modified barthel index; SS-QOL, Stroke Specific Quality Of Life Scale; BBS, Berg balance scale; TBG, Tinetti balance and gait; MAS UL, modified Ashworth scale of the upper limb (determined as the average of the scores of elbow flexors, wrist flexors, and finger flexors of the affected upper limb); MAS LL, modified Ashworth scale of the lower limb (determined as the average of the scores of hip adductors, knee extensors, and ankle plantar flexors of the affected lower limb).

\*Significant for  $p < 0.05$ .

**TABLE 3** | Percentages of effectiveness for in the two groups.

	SPAg		CTRLg	
	Increase T1 vs. T0 (%) ± SD	Increase T2 vs. T0 (%) ± SD	Increase T1 vs. T0 (%) ± SD	Increase T2 vs. T0 (%) ± SD
MBI	53.0 ± 30.9	69.0 ± 26.3	29.3 ± 13.6	58.0 ± 34.1
SS-QOL	27.4 ± 17.5*	29.7 ± 17.2	10.5 ± 7.5	17.9 ± 14.3
BBS	54.4 ± 31.1*	65.3 ± 26.1	26.8 ± 21.3	43.8 ± 31.6
TBG	55.0 ± 28.7	57.1 ± 28.3	35.5 ± 28.3	46.1 ± 32.6

Mean ± standard deviation of percentage increase between T1 and T0 and between T2 and T0. The percentage increase was calculated as follows: [(T1 score – T0 score/maximal score – T0 score) × 100] and [(T2 score – T0 score/maximal score – T0 score) × 100]. PSAg, experimental group; CTRLg, control group; MBI, modified Barthel index; SS-QOL, Stroke Specific Quality Of Life Scale; BBS, Berg balance scale; TBG, Tinetti balance and gait.

\*Significant for  $p < 0.05$  in the between-subject analysis.

nonparametric between-group comparisons (31). This sample-size estimation procedure recommends that at least 15 patients be included in each group (32).

## Blinding

A researcher who was not involved in the intervention sessions carried out the randomization.

Block randomization was performed with a computer-generated randomization list using a block size. Allocation concealment was ensured by using opaque envelopes. The researcher responsible for the randomization process deposited the list in a secure web-based storage.

## Statistical Analysis

An intention-to-treat protocol was adopted. Therefore, independently of the number and duration of the sessions actually performed, the patients remained in the same group they were originally assigned to and were not dropped. Complete case analysis was performed, and only the patients who were not re-assessed at T1 or T2 were considered dropouts.

IBM SPSS Statistics software (v23, IBM Corp., Armonk, NY, USA) was used. Data were reported in terms of means and standard deviations. For the descriptive analysis, we calculated the effectiveness of the increments of the scales used [(T1 score – T0 score/maximal score – T0 score) × 100] and [(T2 score – T0 score/maximum score – T0 score) × 100] (33). The Mann–Whitney *U*-test was used to compare data between groups at T0, T1, and T2. The Friedman test and the Wilcoxon signed-ranks test were used for within-subjects comparison for both groups at times T0–T1 and T0–T2.

## RESULTS

Thirty-three patients met the inclusion criteria and were enrolled in the study. Five patients were released before the end of the training because of limited assistance, and four patients dropped out at T2 because they were involved in a new rehabilitation program (Figure 1). Statistical analysis was performed using the data of 28 patients who completed the evaluations at T1 (SPAg = 15; CTRLg = 13) and using the data of 24 patients who completed the evaluations at T2 (SPAg = 13; CTRLg = 11). As reported in Table 2, both groups showed significant improvement in their scores on all clinical scales used in the within-subjects comparison over time. Significant differences were found for the BBS score at T1 ( $p = 0.01$ ), MAS scores for upper and lower limbs ( $p < 0.01$ ), and the SS-QOL at T2 ( $p < 0.05$ ) in the between-subjects analysis of the SPAg with respect to the CTRLg.

Means ± standard deviations of clinical scales scores at T0, T1, and T2. The analysis of effectiveness revealed that, compared with baseline (T0), the improvement percentage in all clinical scale scores was greater in the SPAg group than the CTRLg (Table 3). Significant differences were found in the between-subject analysis of the BBS ( $p = 0.02$ ) and SS-QOL ( $p = 0.03$ ) scores.

## DISCUSSION

This is the first investigation of the effects of a sequential water-based preparatory approach compared with a conventional

water-based therapy in stroke survivors. Our results confirm that both water-based approaches significantly improve motor functions in people who have suffered a stroke (21, 34, 35). These improvements can be attributed to the water environment, which partially supports the body, thus facilitating whole body movements (36).

From a clinical point of view, we found that the BBS score increased enough (i.e., from 40 to 48 points) to allow patients to pass from a level of assistance needed for walking to a level of safe independent walking only in the SPAg. Notably, this increase in the BBS score also indicates a significant reduction of the risk of falling, passing from a medium fall risk to a low fall risk (26, 37–39). Also for TBG, in the SPAg, the score increased (from 18 to 23), confirming a transition from a fall risk to a low fall risk (28). Interestingly, these improvements remained stable in both scale scores in the follow-up assessment. These results are relevant for several reasons. First, the SPA training improved dynamic motor function in a sample of patients with chronic stroke. This is important because walking functions tend to decline more at 6 months from stroke onset, after a transient initial improvement, and this deficit is associated with long-term disability and reduced QoL (40). Second, this improvement was achieved in a relatively short period of training (4 weeks, 2 sessions/week), showing that a challenging task-oriented and preparatory water-based therapy can be a useful complementary strategy for stroke survivors. Our results also show that the SPA is able to improve the QoL, and this improvement remained stable at follow-up. The significant improvement of the QoL could be related to the high percentage of SPAg improvement in balance and gait, which is reported in **Table 3**. The positive effect on balance functions could have facilitated participants' performance of the activities of daily living, facilitated participation in social activities, and favored indirect continued improvement at follow-up. However, these results should be taken with caution. In fact, the two patients who dropped out at follow-up in each group were among the most severe cases, and this could have partially inflated effectiveness at the follow-up assessment with respect to the T1 assessment. Finally, another potential bias concerns the use of effectiveness: the more the MBI score approaches the top, the more effectiveness increases. When we analyzed the rough percentages of improvement, we found an 11% increment in SPAg from T0 at T1 and a 17% increase from T0 to T2 with a further improvement of 6%, that is, about half of that obtained at T1. Quite similar results were obtained for CTRLg (6 vs. 4%) and for the BBS-score (for SPAg, 20 vs. 26%; and for CTRLg, 11 vs. 17%). Raw percentage and effectiveness are two faces of the same coin, and their values should lead to the same interpretation. We preferred to use effectiveness as the obtained percentage improvement of the maximum achievable improvement, in line

with previous studies on stroke (41, 42), despite the caution needed in interpreting the data.

Surprisingly, spasticity significantly decreased in both groups. The mechanism by which hydrotherapy influences spasticity may be related to depressing the sensitivity of the muscle spindle and a decrease in skin sensitivity, thus reducing gamma fiber activity (43).

## LIMITATIONS

We acknowledge some limitations of the present study. First, our sample included different types of patients with stroke (i.e., hemorrhagic and ischemic, with damage in both right and left hemispheres). Another limitation is the absence of a multisensor instrumental assessment of dynamic balance and gait parameters (44–46). In addition to better tailoring the training for patients, the depth of the water should be adapted to their height. Another limitation is the lack of a third group treated with the land-based therapy. Future studies should take this into consideration in order to better evaluate the effectiveness of the SPA therapy.

## CONCLUSIONS

A sequential, preparatory water-based approach in the short term and midterm can be more effective than conventional aquatic therapy for improving chronic stroke survivors' motor functions and QoL.

## DATA AVAILABILITY STATEMENT

The datasets generated for this study are available on request to the corresponding author.

## ETHICS STATEMENT

The studies involving human participants were reviewed and approved by Local Ethics Committee of Fondazione Santa Lucia IRCCS, (Protocol CE/PROG.728). The patients/participants provided their written informed consent to participate in this study. This clinical trial is registered on <http://clinicaltrials.gov>, under the following trial registration number: NCT04362202.

## AUTHOR CONTRIBUTIONS

Conceptualization was carried out by MT, GT, AC, and MM. MI, MT, and DM implemented the methodology. SD, MI, and MT analyzed the data. SV, GT, and AC performed the investigation. MT, SD, and MI wrote and prepared the original draft. All authors reviewed and edited the manuscript.

## REFERENCES

- Paolucci S, Traballese M, Emberti Gialloreti L, Pratesi L, Lubich S, Salvia A, et al. Post-stroke rehabilitation: an economic or medical priority? Current issues and prospects in light of new legislative regulations. *Ital J Neurol Sci.* (1998) 19:25–31. doi: 10.1007/BF03028808
- Duncan PW, Goldstein LB, Matchar D, Divine GW, Feussner J. Measurement of motor recovery after stroke. Outcome assessment and sample size requirements. *Stroke.* (1992) 23:1084–9. doi: 10.1161/01.STR.23.8.1084
- Inzitari D. The Italian Guidelines for stroke prevention. The Stroke Prevention and Educational Awareness Diffusion (SPREAD) Collaboration. *Neurol Sci.* (2000) 21:5–12. doi: 10.1007/s100720070112

4. Tramontano M, Bergamini E, Iosa M, Belluscio V, Vannozzi G, Morone G. Vestibular rehabilitation training in patients with subacute stroke: a preliminary randomized controlled trial. *NeuroRehabilitation*. (2018) 43:247–54. doi: 10.3233/NRE-182427
5. Brière A, Lauzière S, Gravel D, Nadeau S. Perception of weight-bearing distribution during sit-to-stand tasks in hemiparetic and healthy individuals. *Stroke*. (2010) 41:1704–8. doi: 10.1161/STROKEAHA.110.589473
6. Viosca E, Lafuente R, Martínez JL, Almagro PL, Gracia A, González C. Walking recovery after an acute stroke: assessment with a new functional classification and the Barthel Index. *Arch Phys Med Rehabil*. (2005) 86:1239–44. doi: 10.1016/j.apmr.2004.11.015
7. Bruijn SM, van Dieën JH. Control of human gait stability through foot placement. *J R Soc Interface*. (2018) 15:816. doi: 10.1098/rsif.2017.0816
8. Tramontano M, Piermaria J, Morone G, Reali A, Vergara M, Tamburella F. Postural changes during exteroceptive thin plantar stimulation: the effect of prolonged use and different plantar localizations. *Front Syst Neurosci*. (2019) 13:49. doi: 10.3389/fnsys.2019.00049
9. Tramontano M, Morone G, Curcio A, Temperoni G, Medici A, Morelli D et al. Maintaining gait stability during dual walking task: effects of age and neurological disorders. *Eur J Phys Rehabil Med*. (2017) 53:7–13. doi: 10.23736/S1973-9087.16.04203-9
10. Tramontano M, Bonni S, Martino Cinnera A, Marchetti F, Caltagirone C, Koch G, et al. Blindfolded balance training in patients with parkinson's disease: a sensory-motor strategy to improve the gait. *Parkinsons Dis*. (2016) 2016:7536862. doi: 10.1155/2016/7536862
11. Bonni S, Ponzo V, Tramontano M, Martino Cinnera A, Caltagirone C, Koch G et al. Neurophysiological and clinical effects of blindfolded balance training (BBT) in Parkinson's disease patients: a preliminary study. *Eur J Phys Rehabil Med*. (2018) 55:176–82. doi: 10.23736/S1973-9087.18.05126-2
12. Tramontano M, Dell'Uomo D, Cinnera AM, Luciani C, Di Lorenzo C, Marcotulli M, et al. Visual-spatial training in patients with sub-acute stroke without neglect: a randomized single-blind controlled trial. *Funct Neurol*. (2019) 34:7–13.
13. Mehrolz J, Kugler J, Pohl M. Water-based exercises for improving activities of daily living after stroke. *Cochr Datab Syst Rev*. (2011) 10:1–26. doi: 10.1002/14651858.CD008186.pub2
14. Marinho-Buzelli A, Bonnyman AM, Verrier MC. The effects of aquatic therapy on mobility of individuals with neurological disease: a systematic review. *Clin Rehabil*. (2015) 29:741–51. doi: 10.1177/0269215514556297
15. Vivas J, Arias P, Cudeiro J. Aquatic therapy versus conventional land-based therapy for Parkinson's disease: an open-label pilot study. *Arch Phys Med Rehabil*. (2011) 92:1202–121. doi: 10.1016/j.apmr.2011.03.017
16. Morone G, Paolucci S, Mattia D, Pichiorri F, Tramontano M, Iosa M. The 3Ts of the new millennium neurorehabilitation gym: therapy technology translationality. *Expert Rev Med Devices*. (2016) 13:785–7. doi: 10.1080/17434440.2016.1218275
17. Ayán C, Cancela JM. Effects of aquatic exercise on persons with Parkinson's disease: a preliminary study. *Sci Sports*. (2012) 27:300–04. doi: 10.1016/j.scispo.2011.12.006
18. Salem Y, Scott AH, Karpatkin H, Concert G, Haller L, Kaminsky E, et al. Community-based group aquatic programme for individuals with multiple sclerosis: a pilot study. *Disabil Rehabil*. (2011) 33:720–8. doi: 10.3109/09638288.2010.507855
19. Useros-Olmo AI, Collado-Vázquez S. Efectos de un programa de hidroterapia en el tratamiento de la distonía cervical. *Estudio piloto Rev Neurol*. (2010) 51:669–76. doi: 10.33588/rn.5111.2010489
20. Driver S, O'Connor J, Lox C, Rees K. Evaluation of an aquatics programme on fitness parameters of individuals with a brain injury. *Brain Inj*. (2004) 18:847–59. doi: 10.1080/02699050410001671856
21. Lee D, Ko T, Cho Y. Effects on static and dynamic balance of task-oriented training for patients in water or on land. *J Phys Ther Sci*. (2010) 22:331–6. doi: 10.1589/jpts.22.331
22. Bayraktar D, Guclu-Gunduz A, Yazici G, Lambeck J, Batur-Caglayan HZ, Irkec C, et al. Effects of Ai-Chi on balance, functional mobility, strength and fatigue in patients with multiple sclerosis: a pilot study. *Neurorehabil*. (2013) 33:431–7. doi: 10.3233/NRE-130974
23. Ayán C, Cancela J. Feasibility of 2 different water-based exercise training programs in patients with Parkinson's disease: a pilot study. *Arch Phys Med Rehabil*. (2012) 93:1709–14. doi: 10.1016/j.apmr.2012.03.029
24. da Silva MCR, de Oliveiran RJ, Conceição MIG. Effects of swimming on the functional independence of patients with spinal cord injury. *Rev Bras Med Esporte*. (2005) 11:237e–41e. doi: 10.1590/S1517-86922005000400010
25. Hydrotherapy Association of Chartered Physiotherapists, HACP. *Guidance on Good Practice in Hydrotherapy*. (2009) Available online at: www.csp.org.uk
26. Berg KO, Wood-Dauphinee SL, Williams JI, Maki B. Measuring balance in the elderly: validation of an instrument. *Can J Public Health*. (1992) 83:S7–1.
27. Shah S, Vanclay F, Cooper B. Improving the sensitivity of the Barthel Index for stroke rehabilitation. *J Clin Epidemiol*. (1989) 42:703–9. doi: 10.1016/0895-4356(89)90065-6
28. Tinetti ME, Baker DI, McAvay G, Claus EB, Garrett P, Gottschalk M, et al. A multifactorial intervention to reduce the risk of falling among elderly people living in the community. *N Engl J Med*. (1994) 331:821–7. doi: 10.1056/NEJM199409293311301
29. Williams LS, Weinberger M, Harris LE, Clark DO, Biller J. Development of a stroke-specific quality of life scale. *Stroke*. (1999) 30:1362–9. doi: 10.1161/01.STR.30.7.1362
30. Ansari NN, Naghdi S, Arab TK, Jalaie S. The interrater and intrarater reliability of the Modified Ashworth Scale in the assessment of muscle spasticity: limb and muscle group effect. *NeuroRehabilitation*. (2008) 23:231–7. doi: 10.3233/NRE-2008-23304
31. Cohen J. *Statistical Power Analysis for the Behavioral Sciences*. Revised edition. New York, NY: Academic Press (1977).
32. Byoung SP, Ji WN, Mee YK, Lim KL, Seung MY, Won DL, et al. The effects of aquatic trunk exercise on gait and muscle activity in stroke patients: a randomized controlled pilot study. *J Phys Ther Sci*. (2015) 27:3549–53. doi: 10.1589/jpts.27.3549
33. Shah S, Vanclay F, Cooper B. Efficiency effectiveness and duration of stroke. *Stroke*. (1990) 21:241–6. doi: 10.1161/01.STR.21.2.241
34. Paizan NLM, da Silva R, Borges MA. Hydrotherapy: coadjuvant treatment to kinesiotherapy in patients with sequels after stroke. *Rev Neurocienc*. (2009) 17:314–8. doi: 10.34024/rnc.2009.v17.8523
35. Noh DK, Lim JY, Shin HI, Paik NJ. The effects of aquatic therapy on postural balance and muscle strength in stroke survivors-randomized controlled pilot trial. *Clin Rehabil*. (2008) 22:966–76. doi: 10.1177/0269215508091434
36. Montagna JC, Santos BC, Battistuzzo CR, Loureiro AP. Effects of aquatic physiotherapy on the improvement of balance and corporal symmetry in stroke survivors. *Int J Clin Exp Med*. (2014) 7:1182–7.
37. Ottonello M, Ferriero G, Benevolo E, Sessarego P, Dughi D. Psychometric evaluation of the Italian version of the Berg Balance Scale in rehabilitation inpatients. *Europa Medicophisica*. (2003) 39:181–9.
38. Blum L, Korner-Bitensky N. Usefulness of the Berg Balance Scale in stroke rehabilitation: a systematic review. *Phys Ther*. (2008) 88:559–66. doi: 10.2522/ptj.20070205
39. Berg K, Wood-Dauphinee S, Williams JI. The Balance Scale: reliability assessment with elderly residents and patients with an acute stroke. *Scand J Rehabil Med*. (1995) 27:27–36.
40. Celnik P. Understanding and modulating motor learning with cerebellar stimulation. *Cerebellum*. (2015) 14:171–4. doi: 10.1007/s12311-014-0607-y
41. Paolucci S, Di Vita A, Massicci R, Traballes M, Bureca I, Matano A, et al. Impact of participation on rehabilitation results: a multivariate study. *Eur J Phys Rehabil Med*. (2012) 48:455–66. doi: 10.3389/fneur.2019.00926
42. Morone G, Fusco A, Di Capua P, Coiro P, Pratesi L. Walking training with foot drop stimulator controlled by a tilt sensor to improve walking outcomes: a randomized controlled pilot study in patients with stroke in subacute phase. *Stroke Res Treat*. (2012). 2012:523564. doi: 10.1155/2012/523564
43. Kesiktas N, Paker N, Erdogan N, Gülsen G, Biçki D, Yilmaz H. The use of hydrotherapy for the management of spasticity.

- Neurorehabil Neural Repair.* (2004) 18:268–73. doi: 10.1177/1545968304270002
44. Bergamini E, Iosa M, Belluscio V, Morone G, Tramontano M, Vannozzi G. Multisensor assessment of dynamic balance during gait in patients with subacute stroke. *J Biomech.* (2017) 61:208–15. doi: 10.1016/j.jbiomech.2017.07.034
  45. Belluscio V, Bergamini E, Tramontano M, Orejel Bustos A, Allevi G, Formisano R, et al. Gait quality assessment in survivors from severe traumatic brain injury: an instrumented approach based on inertial sensors. *Sensors (Basel).* (2019) 19:E5315. doi: 10.3390/s19235315
  46. Belluscio V, Bergamini E, Iosa M, Tramontano M, Morone G, Vannozzi G. The iFST: An instrumented version of the Fukuda Stepping Test for balance assessment. *Gait Posture.* (2018) 60:203–8. doi: 10.1016/j.gaitpost.2017.12.010

**Conflict of Interest:** The authors declare that the research was conducted in the absence of any commercial or financial relationships that could be construed as a potential conflict of interest.

The reviewer AB declared a past co-authorship with one of the authors MI to the handling editor.

Copyright © 2020 Temperoni, Curcio, Iosa, Mangiarotti, Morelli, De Angelis, Vergano and Tramontano. This is an open-access article distributed under the terms of the Creative Commons Attribution License (CC BY). The use, distribution or reproduction in other forums is permitted, provided the original author(s) and the copyright owner(s) are credited and that the original publication in this journal is cited, in accordance with accepted academic practice. No use, distribution or reproduction is permitted which does not comply with these terms.